

Minihaus in Kobe

Mini-house in Kobe

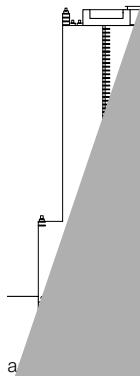
Architekt:
Hiroaki Ohtani, Kobe
Tragwerksplaner:
Hirokazu Touki, Kobe

Fotos:
Kouji Okamoto/Techni Staff, Shinkenshiku-sha

This tiny (just 33 m²) plot offered a chance for a young couple to build a house in expensive downtown Kobe. But it meant a radical change of lifestyle. Storage space and separate, closed-off rooms had to be sacrificed. Behind the largely glazed front, some privacy is gained through offsetting the levels inside.

Slats built into the facade and a large tree outside also screen the interior. The space is maximised by using few materials and concealing details. The double-staircase, at first sight seemingly over-actually fulfils the same purpose, linking levels into a single space continuum, allowing diverse visual connections between various areas. The wooden steps, as seats, take up the theme of the concrete slats.

Throughout the house over 180 precast units were threaded on cables; where they form a column they act as structural columns, in the non-supporting section they are evenly spaced. Steps, seats and supply lines are also concealed.

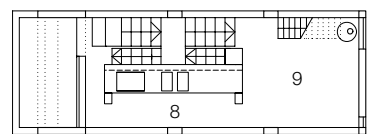
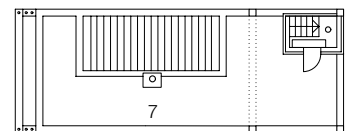


a

D

DEFAUL

...jedem Punkt verschie-
...ten anbietet. Die
... zum Sitzen und Ent-
... zeitig korrespondieren
... wärtigen Betonlamellen.
... schienen dem Archi-
... als Baumaterial beson-
... Sie sind haltbar und robust,
... Qualität ist leicht zu erzielen.
... halten sie dauerhaft eine etwas
... ertige Ausstrahlung, leichte Un-
... geben eine kaum sichtbare
... das Grundstück zu eng für
... Baugerät war, entwickelten Archi-
... Tragwerksplaner ein von Hand zu
... des System, ähnlich traditionellen
... chen Holzkonstruktionen: Über 1800
... tale Elemente sind auf vertikale
... stäbe aufgefädelt. Geschossweise ge-
... nt, wirken die massiven Bauteile als tra-
... de Stützen bzw. Wandscheiben. In den
... nt tragenden Abschnitten ist jede zweite
... position offen gelassen, neben den einge-
... chobenen Tritt-, Sitz- und Ablagebrettern
... verbergen sich in den Schattenfugen auch
... Schalter und Anschlüsse.

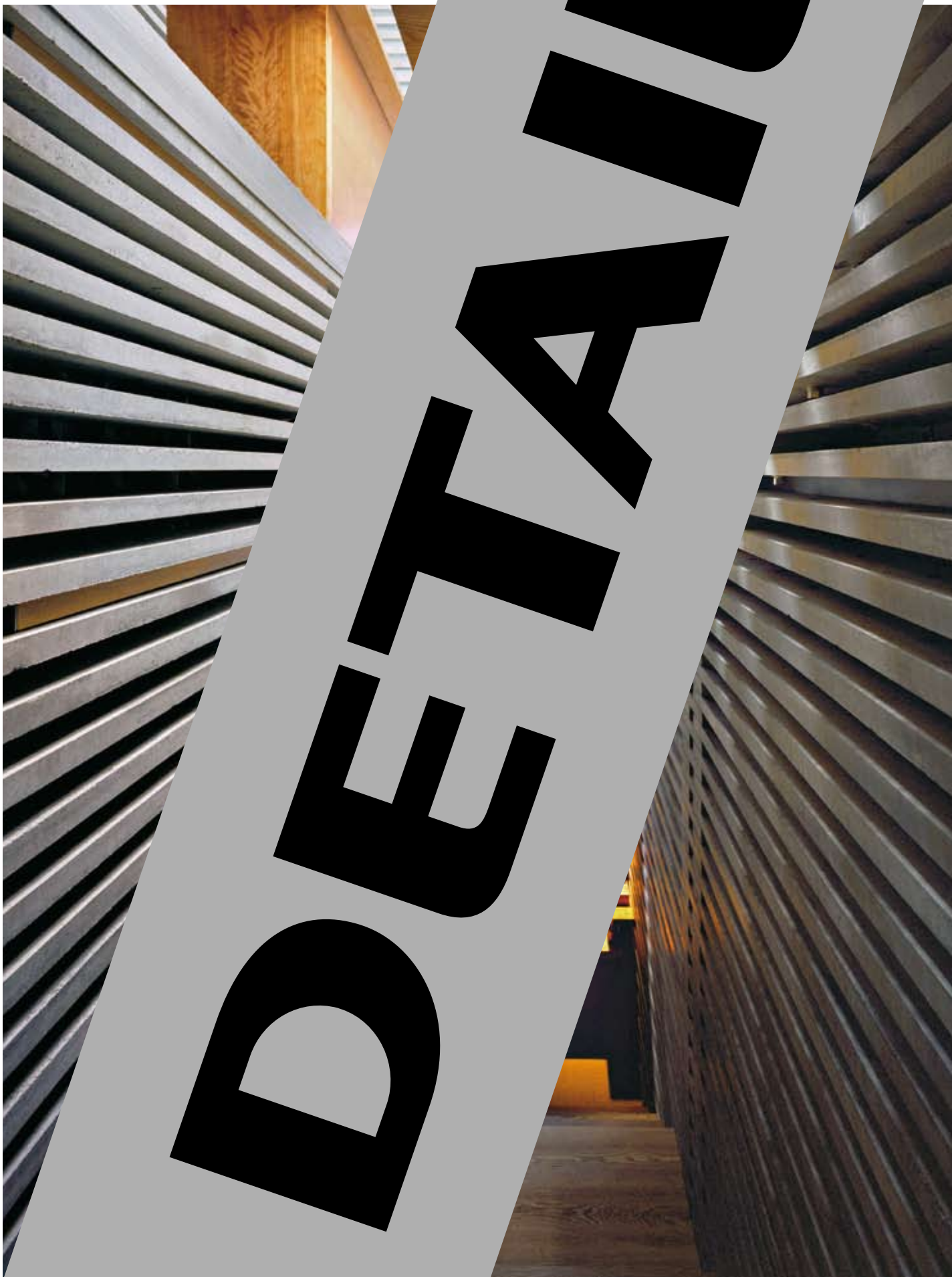


- 10 Bad
- 9 Arbeitszimmer
- 8 (künftiges
- 7 Kinderzimmer)
- 6 Dachterrasse
- 5 Küche
- 4 Essplatz

Sections • Floor plans
scale 1:200

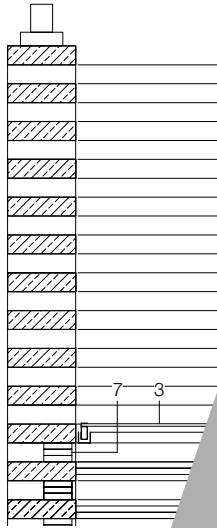
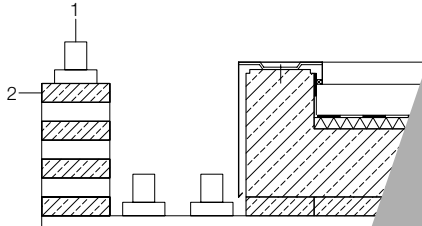
- 1 Entrance
- 2 Storage
- 3 Bedroom
- 4 Front garden

- 5 Bathroom
- 6 Work room
(later children's
room)
- 7 Roof terrace
- 8 Kitchen
- 9 Dining area



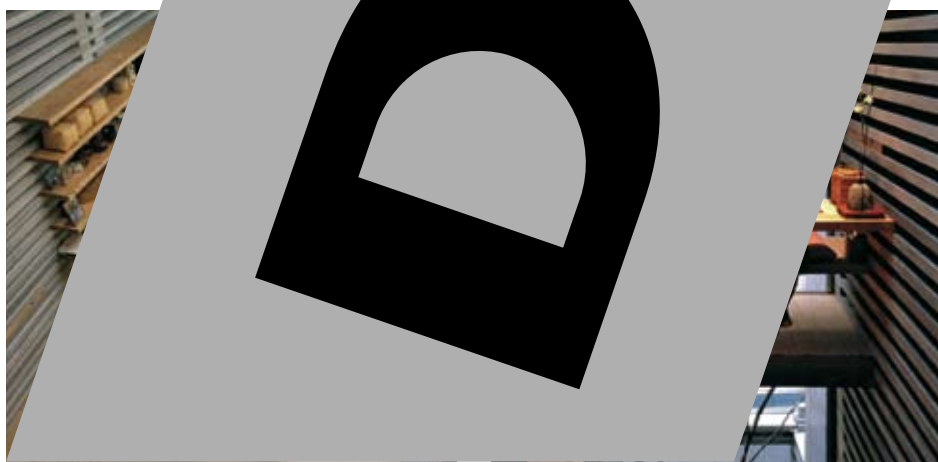
Schnitte
Maßstab 1:20

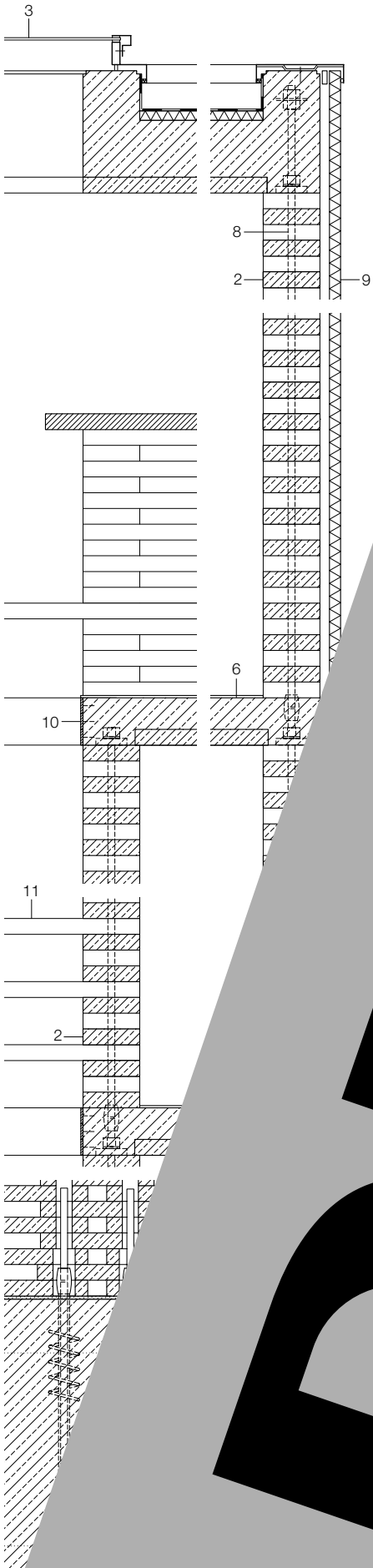
Sections
scale 1:20



DETAIL

- Spannvorrichtung
r Straßenfront
- 100 Elemente bis
- zwei Stahlkabel in
nt, an den Schmalseiten
- eckkappen
- transparent 10 mm
- nt 15 + 15 + 19 mm
- in Aluminiumrahmen
- 80 mm
- uzent 15 + 15 + 19 mm
- zum Auffädeln der Beton-
- massiven, tragenden Wand-
- ch dem Auffädeln geschossweise
- : 300 kN, EG: 250 kN, OG: 150 kN),
- Zwischenräume Stahlkabel/Fertig-
- ussmörtel aufgefüllt
- anel Stahlblech verzinkt mit
- naumkern, auf Stahlabstandshaltern
- Edelstahl 6/50 mm
- Holz 50 mm zwischen Betonfertigteilen
- aubt
- ss-steel cap (on top of steel-cable tensioning
et front)
- 80 mm precast concrete
- d throughout the house for 1800 slats of up to
- 00 mm in length; slats over 1000 mm long are
- nsoned along their length with two steel cables
- ircular stainless-steel caps visible on the ends)
- skylight, 10 mm transparent polycarbonate
- transparent glass strips, 15 + 15 + 19 mm
- sliding panel, toughened glass in aluminium frame
- sisal carpet, 100 mm reinforced concrete
- 50/180 mm precast concrete
- 7 translucent glass strips, 15 + 15 + 19 mm
- 8 Ø 23 mm steel cable for threading precast concrete
- slats in the solid, supporting wall sections; after
- threading, cables tensioned per floor (basement:
- 300 kN; ground floor: 250 kN; 1st floor: 150 kN),
- then intermediate areas between cables and slats
- filled in with jointing mortar
- 9 sandwich panel, galvanized steel skin enclosing
- rigid PU foam core, on steel spacers
- 10 6/50 mm stainless-steel bar
- 11 50 mm wooden step, bolted between precast
- concrete slats





DETAIL

