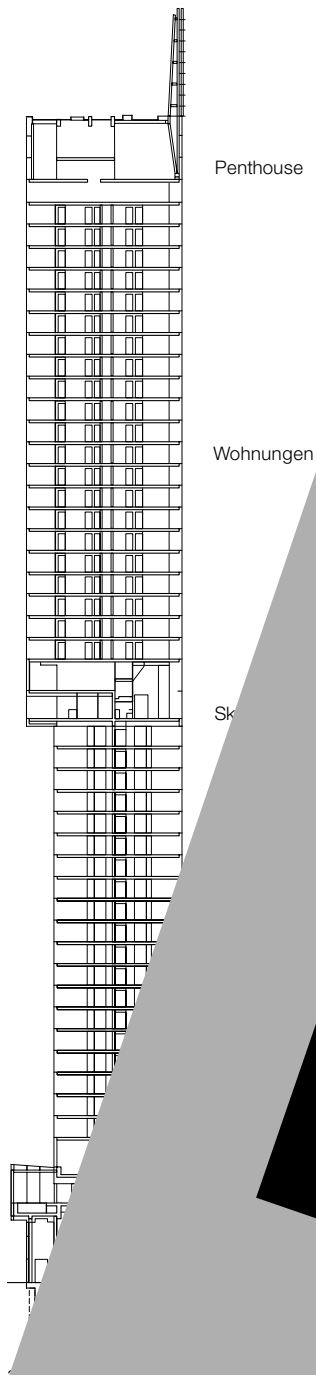


Hotelhochhaus in Manchester

High-Rise Hotel in Manchester

Architekten:
Ian Simpson Architects, Manchester
Projektleiter:
David Green

Fotos:
Daniel Hopkinson



DETAILED

Situated on Deansgate, the Hilton Hotel is a landmark building in the heart of Manchester, a city undergoing significant structural changes. The building is a prime example of modern architecture in a formerly industrial city. In 2006, the 169-metre-tall tower became not only the tallest in Manchester but also one of the highest housing and hotel buildings in Europe. Its 48 storeys are divided into three main sections. The floors up to level 24 are occupied by the Hilton Hotel with 279 rooms. The top half of the tower are 219 privately owned apartments.

The building's structure rises next to a broad pedestrian walkway, a building three storeys high which houses public areas such as a restaurant, conference centre and assembly hall. The two main sections are linked by a glazed atrium that provides a common entrance zone opening on to a lobby, restaurant and cafe. From here, stairs lead to the conference centre. The pool and spa areas are directly linked with the hotel in the two-storey plinth structure. Since this is broader than the tower itself, it was possible to daylight the pool via an elongated glass roof. The guest rooms have a restrained coloration, so that the main attraction is the spectacular view through the room-height glazed facade.

Situated on the 23rd and 24th floors, the Sky Bar extends over the entire storey area and forms a visible break between the hotel and housing functions. The bar and all floors above project out on the north side by four metres. The south face of the flats is constructed with a double-skin facade, which forms a naturally ventilated buffer zone. Balconies in the 1.70-metre-deep intermediate space provide sunshading for the dwellings beneath.

Designed to serve many different needs, the external skin nevertheless has a homogeneous overall appearance. The verticality of the structure is accentuated not only by the narrow sunshading louvres that extend over all floors and by fritting over part of the facade, but by the slender glass fin at the top of the tower. Reaching up into the sky as a continuation of the south face, this element seems to blur the line between the building and the clouds.

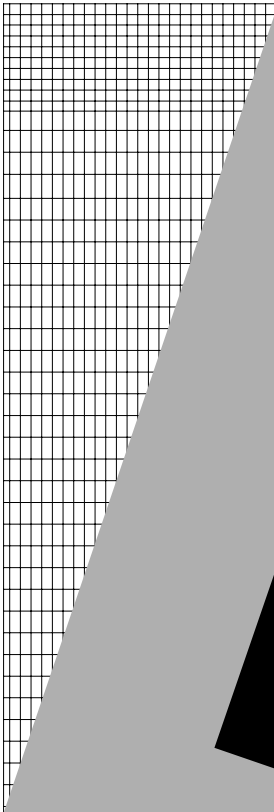
Die Vertikali-
tät der Gebäu-
de wird durch
die vertikalen
Läden über alle
Etagen und die
Frittinge über
Teile der Fassa-
de, sowie durch
die schlanke Glas-
fuge an der Spitze
des Turms, die als
Fortsetzung der
Südfassade in den
Himmel reicht, zu
einem einzigen
Gebäude zu
werden scheint.

Lageplan
Maßstab 1:2000
Schnitte
Maßstab 1:1000

Site plan
scale 1:2000
Sections
scale 1:1000

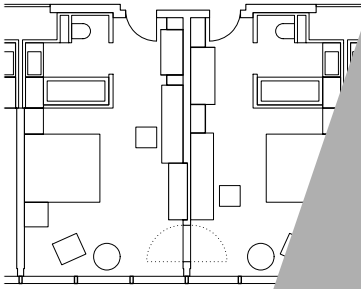
Zimmeranzahl / No. of rooms: 279
Zimmergrößen / Room sizes: 27–30 m²
Zimmerpreise / Room rates: 165–286 TM
Grundstücksgröße / Site area: 4679 m²
BGF / Gross floor area: 27 900 m²
Baukosten / Construction costs: 96,8 Mio. TM

DETAIL

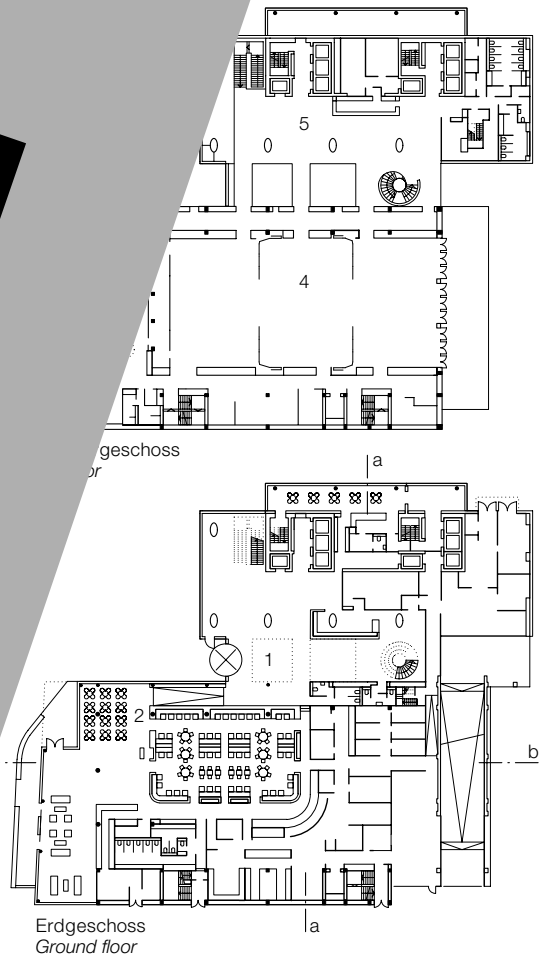


Grundriss Zimmer
Maßstab 1:200
Grundrisse
Maßstab 1:1000

Room layout
scale 1:200
Floor plans
scale 1:1000



DETAIL



1. Obergeschoss

Erdgeschoss
Ground floor