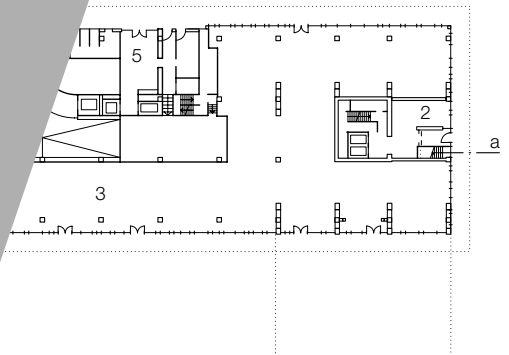
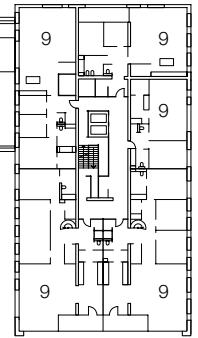
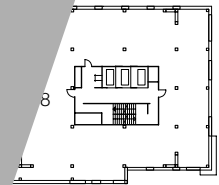
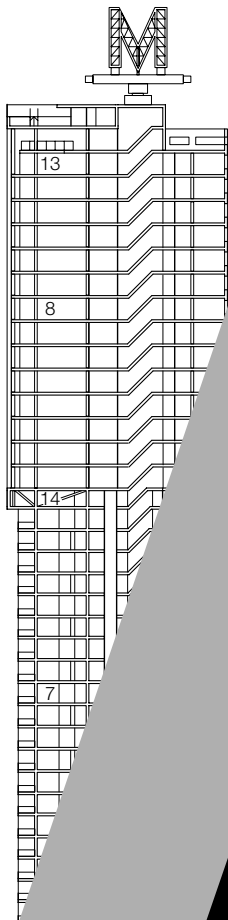


## Wohn- und Bürohochhaus Montevideo in Rotterdam

### Montevideo High-Rise Housing and Office Block in Rotterdam

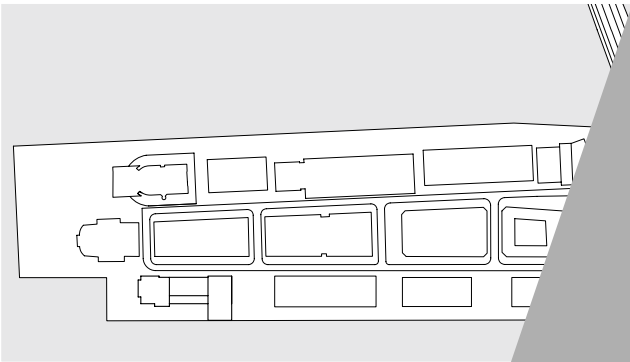
Architekten:  
Mecanoo architects, Delft  
Projektarchitektin:  
Francine Houben  
Tragwerksplaner:  
ABT, Delft

Fotos:  
Christian Richters



- 1 Zugang  
Wohnungen Turm
- 2 Zugang  
»Water«-Wohnungen
- 3 vermietbare Fläche
- 4 Zufahrt Tiefgarage
- 5 Fahrradabstellraum
- 6 »Loft«-Wohnungen
- 7 »City«-Wohnungen
- 8 »Sky«-Wohnungen
- 9 »Water«-Wohnungen
- 10 Bürofläche
- 11 Fitnesscenter
- 12 Schwimmbad
- 13 Penthouse
- 14 Technikenebene
- 15 Parken

- 1 Access to  
dwellings in tower
- 2 Access to "water" flats
- 3 Rentable areas
- 4 Access to  
basement garage
- 5 Bicycle store
- 6 "Loft" flats
- 7 "City" flats
- 8 "Sky" flats
- 9 "Water" flats
- 10 Offices
- 11 Fitness centre
- 12 Swimming pool
- 13 Penthouse
- 14 Services level
- 15 Parking



...n • Floor plans  
... 1:1000  
... plan  
... le 1:7500



Nachdem der P  
Verlagerung d  
dung an Bed  
sich auf den  
Stadtviertel  
wickeln, d  
cke einer  
Zentrum  
den Au  
haus a  
zu er  
Hoch  
ein  
ka  
L

Nie-  
an di-  
st als  
gegensei-  
gelegt  
den Hoch-  
mit Mauer-  
und Loggien.  
nd als Stahl-  
ragen den  
niedrigeren,  
den Baukörper.  
wurden in Stahl-  
nnik errichtet; ab  
derum ein Stahl-  
ass die Wohnungen

hier frei unterteilbar sind. Dies ermöglichte eine vielfältige räumliche Struktur im Inneren. 192 Wohnungen verteilen sich auf insgesamt 54 verschiedene Typen und unterschiedliche Geschosshöhen. Außerdem sind im Gebäude Büros und Gemeinschaftseinrichtungen untergebracht und die Bewohner können eine Vielzahl hausinterner Serviceeinrichtungen nutzen wie Swimmingpool, Fitnesscenter, Restaurants oder Reinigung. In den Untergeschossen befindet sich eine zweigeschossige Tiefgarage. Fenster, Balkone, und Loggias verteilen sich rhythmisch über die Gebäudeoberfläche, deren Materialität zwischen verschiedenfarbigem Mauerwerk und Aluminiumbekleidung wechselt.



Detailschnitt Maßstab 1:20

- 1 Verkleidung Aluminiumkassetten  
gekantet 3 mm  
Wärmedämmung 50 mm  
Stahlbetonfertigteile 300 mm  
Putz 15 mm
- 2 Befestigungswinkel Aluminium  
mit Langlochverbindung
- 3 Aluminiumfenster mit Isolierverglasung  
Float 6 + SZR 16 + Float 4 mm
- 4 Fensterbank Werksteinplatte 18 mm
- 5 Entwässerungsrinne  
Aluminiumblech gekantet 2 mm
- 6 Aluminiumprofil L 70/70/7 mm
- 7 Abdeckung Aluminiumblech  
gekantet pulverbeschichtet 2 mm
- 8 Mauerwerk 100 mm  
Luftschicht 30 mm  
Wärmedämmung 100 mm  
Porenbeton 200 mm  
Putz 15 mm

Sectional details scale 1:20

- 1 3 mm sheet-aluminium coffered panel  
50 mm thermal insulation  
300 mm precast concrete element  
plaster 15 mm
- 2 aluminium angle bearer with slot
- 3 aluminium window with double  
6 mm float glass + 16 mm cavity  
4 mm float glass
- 4 18 mm cast-stone window  
sill
- 5 2 mm sheet-aluminium drainage  
channel bent to shape
- 6 70/70/7 mm aluminium profile
- 7 2 mm powder-coated sheet-aluminium  
covering bent to shape
- 8 100 mm brick outer skin  
30 mm cavity  
100 mm thermal insulation  
200 mm aerated concrete  
plaster 15 mm

# DETAILED

our operations to the  
use, the port in the city  
importance. This allowed  
with housing and offices  
the former harbour area,  
the construction of the  
created a direct link between  
ment and the centre of Rot-  
architects were commissioned to  
cept for a high-rise housing  
outh of the Wilhelmina Pier, on  
of which tower structures al-  
d.

the end of the pier from where  
ers of the Holland-America line once  
New York and where warehouses  
lines like "New Orleans" and "Havana"  
the tallest housing block in the Nether-  
has been erected. In recollection of  
long-standing traditions of this area, the  
-metre-high tower is called Montevideo.  
The building is a composition of stacked,  
overlapping volumes and makes reference to  
the classical high-rise developments of the  
1920s and 30s with their brick facades and  
their many loggias and roof terraces.

The first two storeys have a steel structure,  
which supports the tower as well as a lower  
volume that cantilevers out by 15 metres to-  
wards the water. The next 27 storeys above  
the steel plinth were constructed in reinforced  
concrete, using a climbing shuttering system.  
From the 28th storey upwards, the structure  
is again in steel, which allowed a free division  
of the dwellings at the top of the high-rise  
block as well as many possible variations in  
the internal layout. Altogether there are 192  
flats, comprising 54 different types, with vary-  
ing room heights.

The development also contains offices and  
communal facilities. Residents can take ad-  
vantage of a wide range of internal services,  
such as a swimming pool, a health and fitness  
centre, restaurants and a dry-cleaning shop.  
Parking space is provided in a two-storey  
basement garage. The windows, balconies  
and loggias are laid out rhythmically over the  
face of the building. The balustrades were ex-  
ecuted with materials ranging from brickwork  
of different colours to aluminium cladding.

